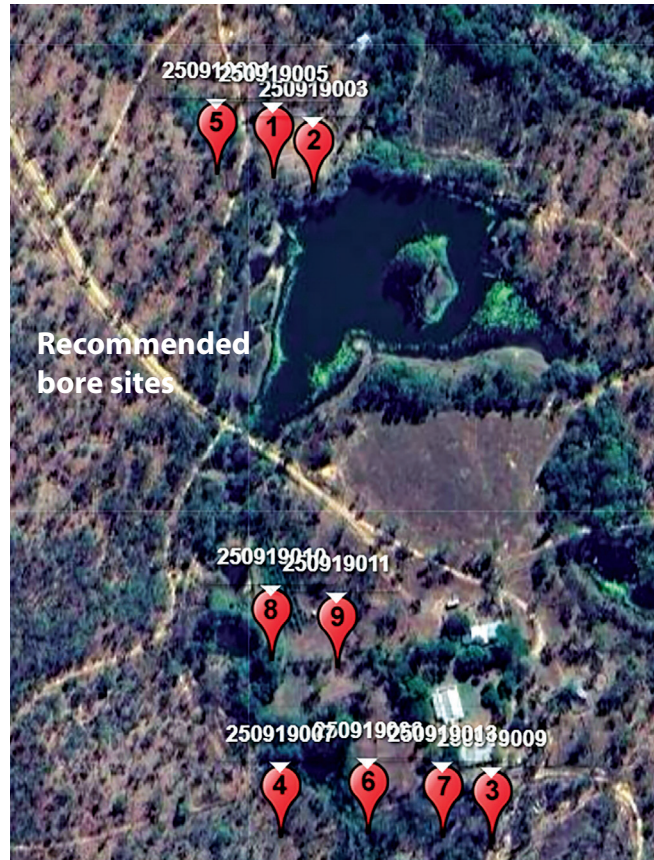


## Report inclusions continued...

### Point Virtual Logs 41

Point 250923007

No	L	A	From (mht)	To (mht)	Label	Acqifer	Condition	Fractured Acqifer	Min Yield (l/s)	Max Yield (l/s)	Stn Yield (l/s)	Prepate Hydraulic Conductivity (m/s)	Matrix Hydraulic Conductivity (m/s)	Porosity (%)	Specific Storage (1/m)	Storativity	Diffusivity (m <sup>2</sup> /d)	Clay(%)	Density (kg/m <sup>3</sup> )
1			0.1	3	Sediment	Unconsolidated	Fine	0.2	2.3	1	7.02e-1	3.52e+0	27.1	4.57e-5	4.14e-6	6.46e-3	2	1.29e+3	
2			5.1	7.3	Wlastic	Consolidated	Washed	0	0	0	6.90e-2	3.40e-2	19.1	5.08e-6	4.60e-7	6.46e-3	2.9	2.07e+3	
3			7.3	17.4	Sediment	Unconsolidated	Fine	0.1	1.2	0.5	3.67e-1	1.82e+0	20.3	6.91e-6	5.36e-7	4.72e-3	2.7	1.99e+3	
4			17.5	33.3	Wlastic	Consolidated	Washed	0.2	0.2	0.1	4.67e-1	2.31e-1	19.1	5.08e-6	4.60e-7	6.46e-3	2.9	2.07e+3	
5			33.4	59.9	Sediment	Unconsolidated	Fine	0.3	2.9	1.5	8.60e-1	4.30e+0	19.5	5.49e-6	4.78e-7	5.96e-3	2.8	2.05e+3	
6			60	100	Wlastic	Consolidated	Fractured	Fractured	0.6	2.3	1.5	1.91e+0	3.44e+0	19.1	5.08e-6	4.60e-7	6.46e-3	2.9	2.07e+3

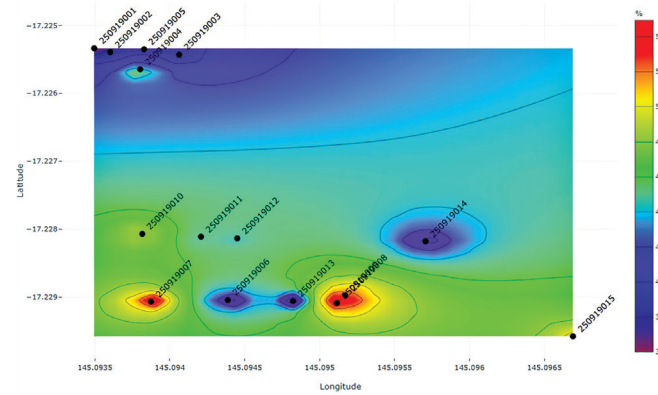


## Confidence and Risk

### Reduce the risk of a dry hole

- The program calculates the **Risk** of attaining specified yield parameters defined by the site noise content, data correlation, data signal to noise ratios and number of strikes used in processing.
- It also calculates the **Confidence** in attaining the point specified yield parameters indicated in the recommendations table.
- These factors will help you make an informed decision on bore placement and depth.

### Calculated Risk (%)



0428 250 364

[findwater@aquifermapping.au](mailto:findwater@aquifermapping.au)

Based in Mareeba, Queensland

# SEISMOELECTRIC GROUNDWATER PROSPECTING



## What is it? How does it help find groundwater?

The seismo-electric effect refers to the generation of electrical fields as a result of seismic wave propagation through fluid-saturated porous media. This phenomenon provides a powerful tool for subsurface exploration, integrating seismic and electro-magnetic methods to reveal information about porosity, permeability and fluid content.

The seismic wave is generated by striking a sledge-hammer on a thick steel plate on the ground, the response is measured on a digital acoustic recording device. A single site can be completed in 10 minutes.



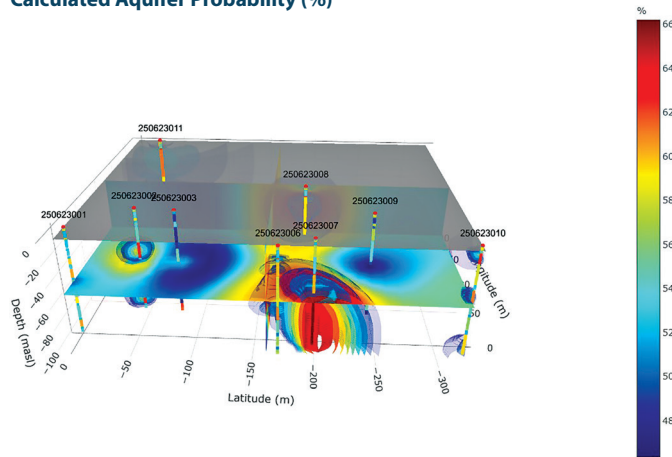
## What's involved? What gets delivered?

### The agreement delivers:

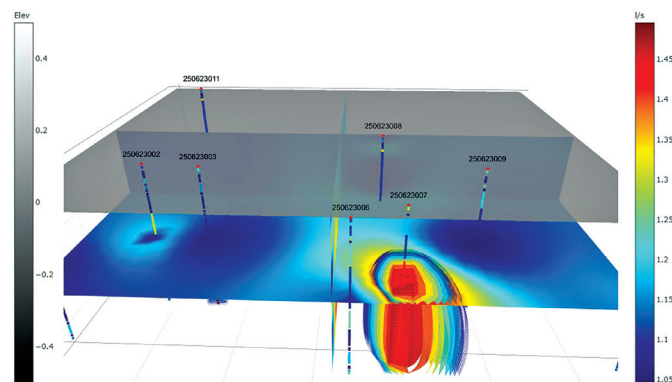
A preliminary report that details the planning and preparation to help you find your groundwater needs. We do an assessment of local geology, local registered bores and put together a proposed survey plan.

Our team comes to your property for a preliminary site visit to assess access and potential survey sites. Then we undertake the survey. For small sites, the field work can be completed in one day. Big stations take longer. It normally takes 24-48 hours to have the final report prepared and sent to you.

### Calculated Aquifer Probability (%)



### Calculated Sustainable Yield Estimate (l/s)



### The report includes:

- A detailed html file that can be kept and accessed offline.
- A PDF report of the major results and recommendations.
- Features such as Aquifer Probability and Sustainable Yield are calculated from an array of hydrologic properties such as hydraulic conductivity, transmissivity, water quality, porosity and permeability and geotechnical, acoustic and electrical properties.
- These properties are presented as plans, projected sections and virtual logs.

